

環保新冷媒

R407C



**HITACHI**  
Inspire the Next

# HITACHI PACKAGED AIR CONDITIONERS WATER-COOLED TYPE

日立水冷式箱型空調機



**Models :**

Free-Blow Type

直吹型

RP-P5W

RP-P8W

RP-P10W

RP-P15W

Duct-Connection Type

風管型

RP-P5WP

RP-P8WP

RP-P10WP

RP-P15WP

RP-P20WP

RP-P25WP

RP-P30WP

RP-P40WP

Nominal Capacity Range

額定容量範圍

12,000 kcal/h to 96,300 kcal/h at 50Hz

14,000 W to 112,000 W at 50Hz

47,700 Btu/h to 382,100 Btu/h at 50Hz

13,800 kcal/h to 107,500 kcal/h at 60Hz

16,000 W to 125,000 W at 60Hz

54,600 Btu/h to 426,500 Btu/h at 60Hz



# STREAM LINED SHAPE AND TOP OF THE LINE PERFORMANCE PERFECTED WITH A HIGH-EFFICIENCY COMPONENTS

HITACHI has developed packaged air conditioners <water-cooled type> with a sleek new look. In addition to excellent performance providing high efficiency, high reliability and low noise, the design has been upgraded. Moreover, a slim design has further relaxed restrictions on installation. The air conditioners of this type are available for use in factories, shopping center, offices, restaurants, karaoke bars, super markets and similar places. An extensive lineup features 5 to 40 horsepower models. All horsepower models adopt a high efficiency scroll compressor. Users can choose the optimum model according to applications or purposes.

日立水冷式箱型空調機，除了具有流線型美觀的設計外，它優越的品質更是備受肯定，為了提升產品性能，在設計上更要求高效率、低噪音及高信賴度。除此之外，更精巧地減少安裝空間的限制，無論是工廠、購物中心、辦公室、餐廳、卡拉OK俱樂部或超級市場等類似場所均適用。日立水冷式箱型的機型包括5~40匹馬力，全系列的機型都採用了渦卷式壓縮機，顧客可依自己的需求選擇最適合的機型，搭配使用。

## FEATURES 特點

- ◆ Adopting R407C refrigerant.  
採用環保新冷媒R407C
- ◆ Slim design, space saving, energy saving.  
流線型設計、省空間、省能源
- ◆ Low noise, low vibration.  
低噪音、低振動
- ◆ Easy Operation.  
操作簡單  
Electrical control, easy operation and failure check.  
運轉控制電子化，操作與檢點容易。
- ◆ Completely control and protection function.  
完整控制及保護功能
  - (1) Compressor protection design  
(To avoid compressor damaged by sudden power ON/OFF).  
壓縮機運轉保護功能。
  - (2) Remote wiring control of temperature adjustment (For special order).  
可利用信號接點連接室內溫度調節開關（特別受注）。
  - (3) Quick restart (Within 2 seconds).  
瞬間停電後自動復電（2秒以內）。
  - (4) Anti frost function (Cooler Assembly side).  
防止蒸發器結霜控制功能。

## OPTIONAL PARTS 選購配件

- ◆ Electric heater, Hot water heater, Steam heater  
電氣加熱器、溫水加熱器、蒸氣加熱器
- ◆ Humidifier  
加濕器
- ◆ Long life air filter  
長壽命空氣濾網

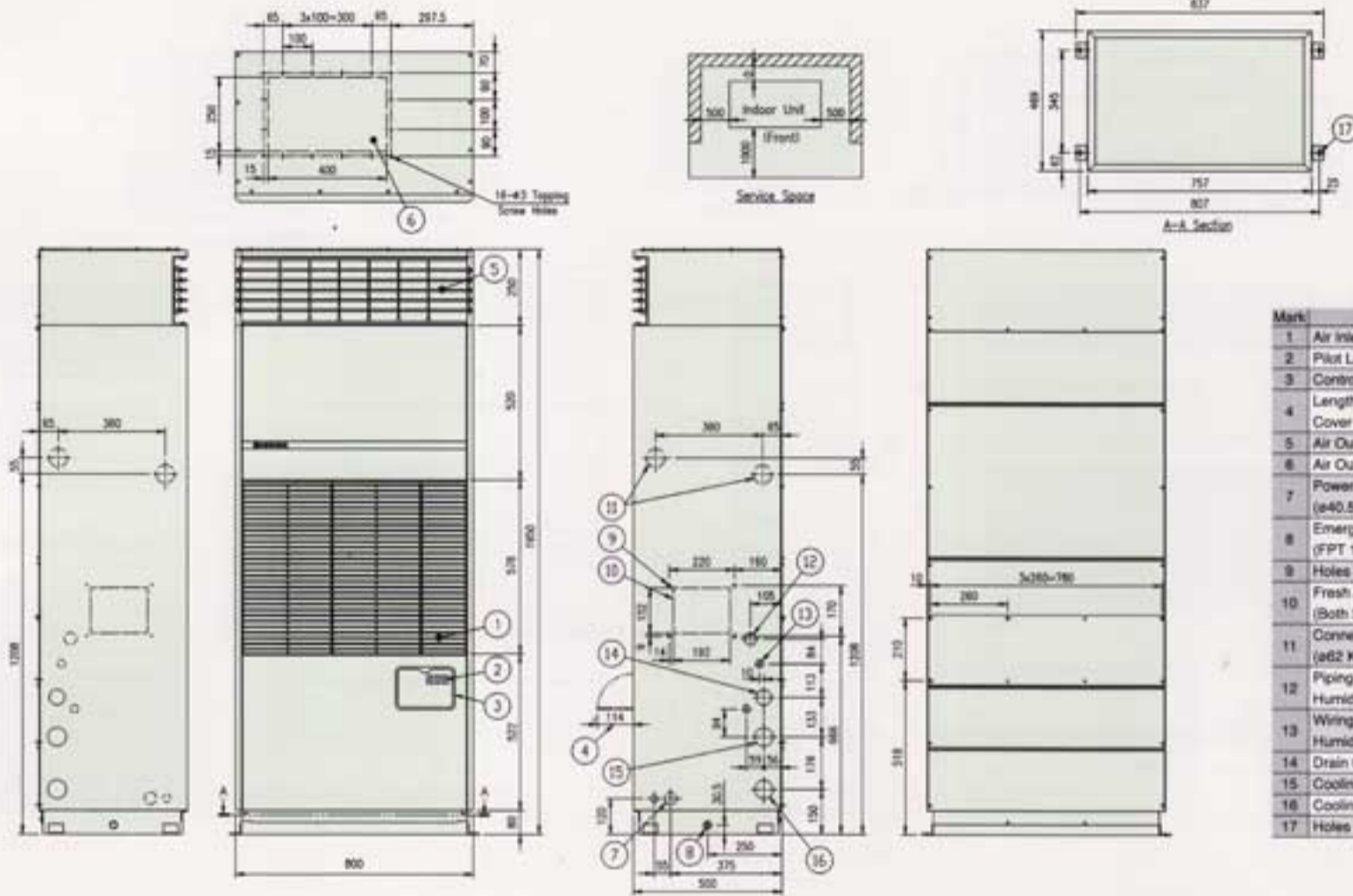




# DIMENSION 外觀尺寸

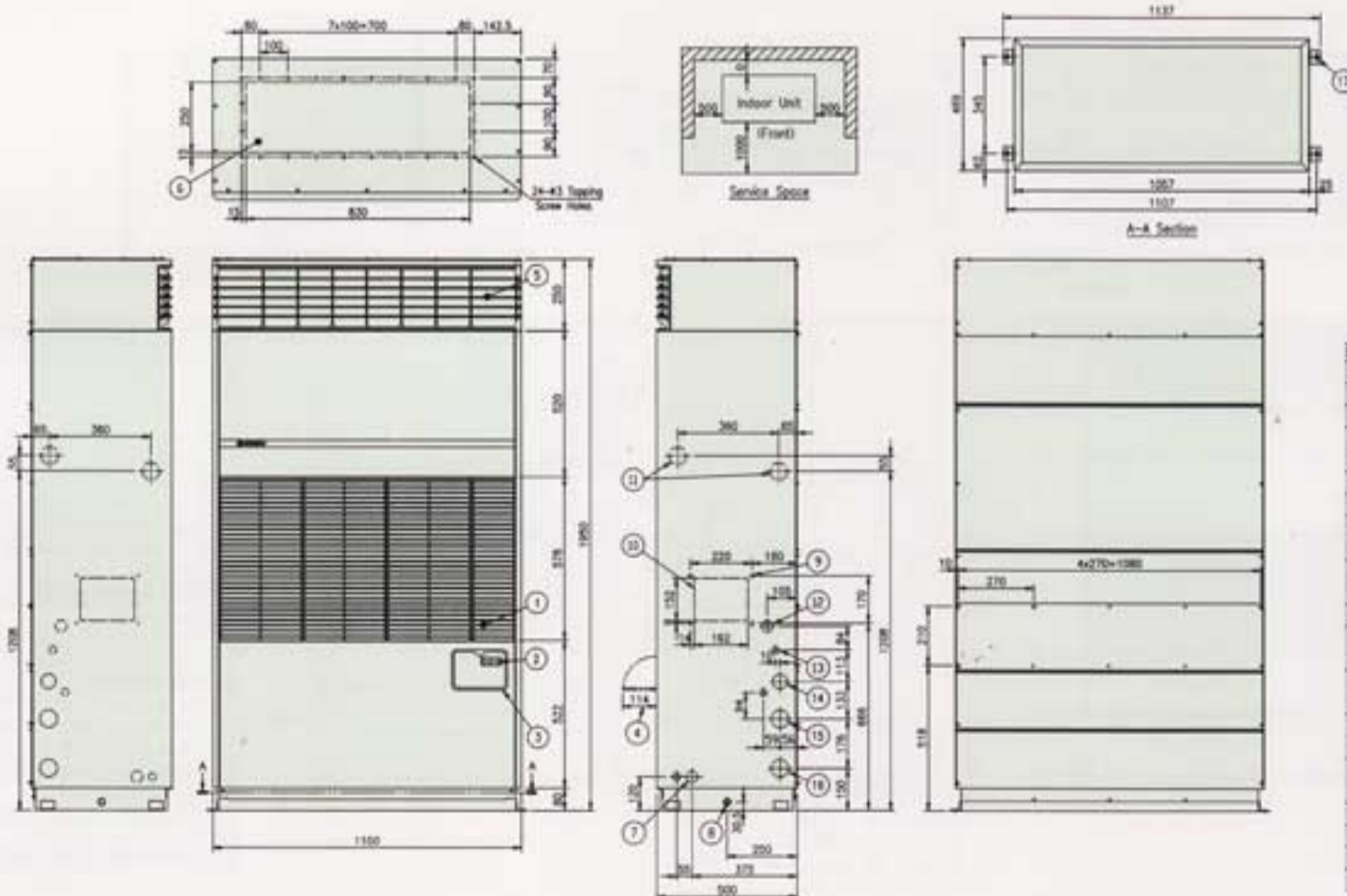
## FREE-BLOW TYPE (直吹型)

### RP-P5W



Mark	Name
1	Air Inlet (Front)
2	Pilot Lamp
3	Control Panel Cover
4	Length for Opening Control Panel Cover
5	Air Outlet (Front)
6	Air Outlet (Upper)
7	Power Source Wiring Hole (ø40.5 Knockout Hole)
8	Emergency Drain Connection (FPT 1/2")
9	Holes for Tapping Screw
10	Fresh Air Inlet (Both Sides by Duct, Field Option)
11	Connection Hole for Optional Heater (ø62 Knockout Hole)
12	Piping Connection Hole for Optional Humidifier (ø40.5 Knockout Hole)
13	Wiring Connection Hole for Optional Humidifier (ø26.1 Knockout Hole)
14	Drain Connection (FPT 1")
15	Cooling Water Outlet (FPT 1-1/4")
16	Cooling Water Inlet (FPT 1-1/4")
17	Holes for Anchor Bolt (4-M8)

### RP-P8W

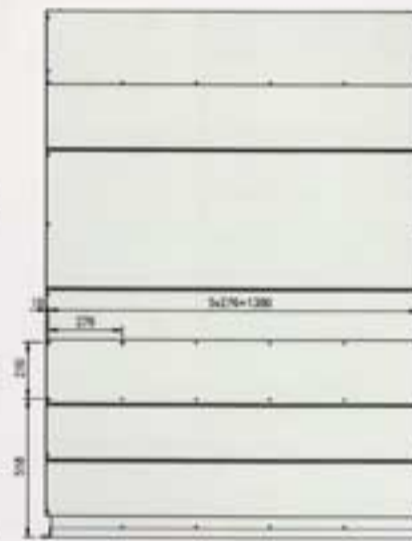
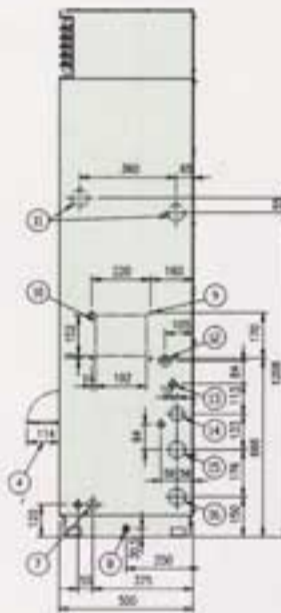
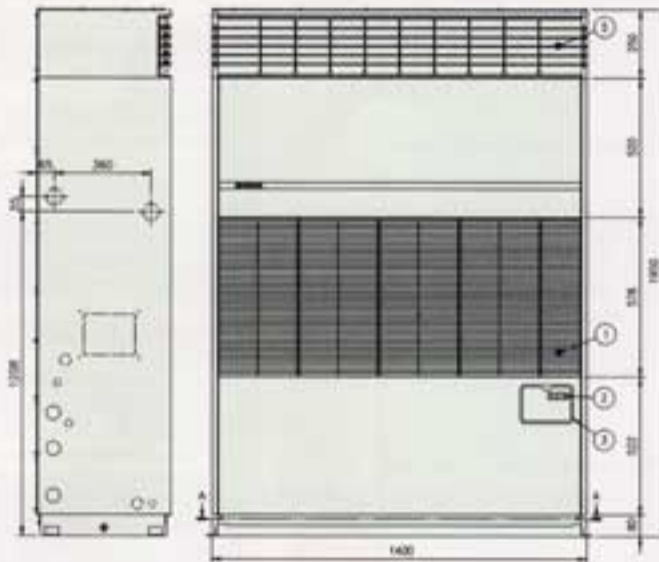
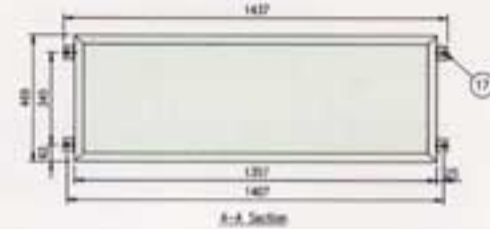
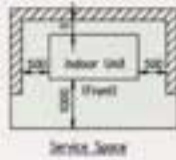
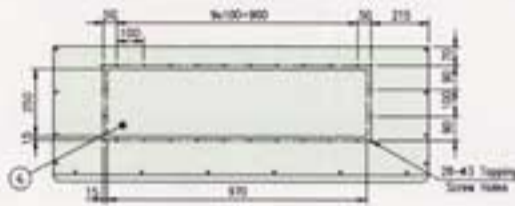


Mark	Name
1	Air Inlet (Front)
2	Pilot Lamp
3	Control Panel Cover
4	Length for Opening Control Panel Cover
5	Air Outlet (Front)
6	Air Outlet (Upper, for Branch Duct)
7	Power Source Wiring Hole (ø40.5 Knockout Hole)
8	Emergency Drain Connection (FPT 1/2")
9	Holes for Tapping Screw
10	Fresh Air Inlet (Both Sides by Duct, Field Option)
11	Connection Hole for Optional Heater (ø62 Knockout Hole)
12	Piping Connection Hole for Optional Humidifier (ø40.5 Knockout Hole)
13	Wiring Connection Hole for Optional Humidifier (ø26.1 Knockout Hole)
14	Drain Connection (FPT 1")
15	Cooling Water Outlet (FPT 1-1/2")
16	Cooling Water Inlet (FPT 1-1/2")
17	Holes for Anchor Bolt (4-M8)

# DIMENSION 外觀尺寸

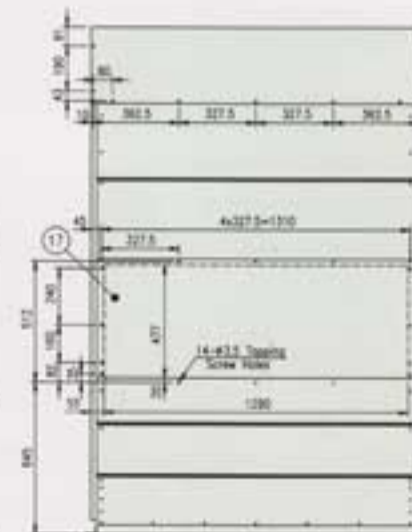
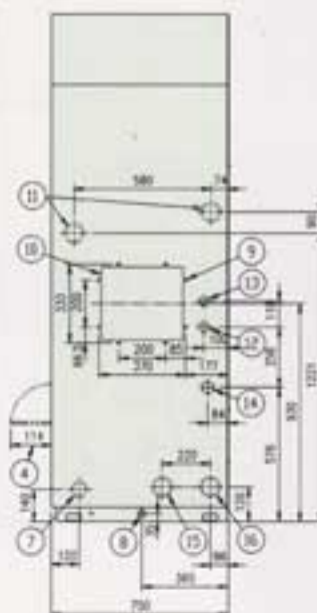
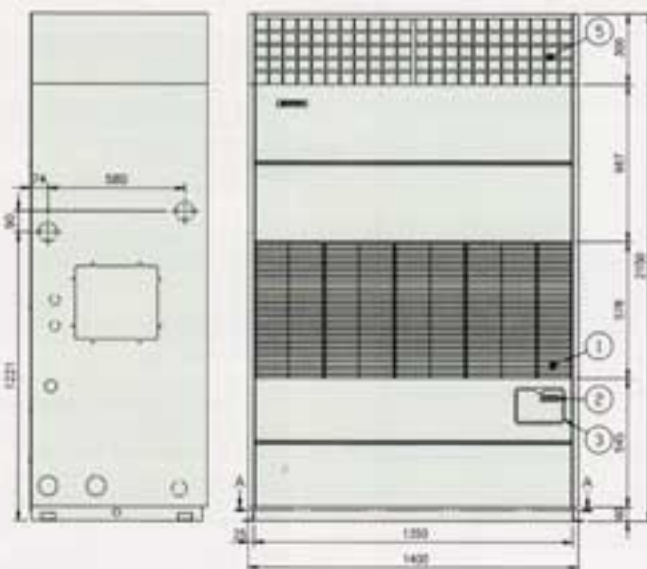
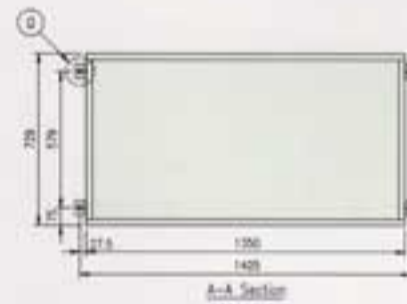
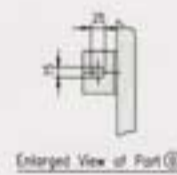
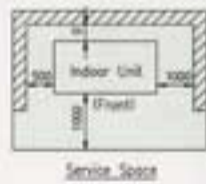
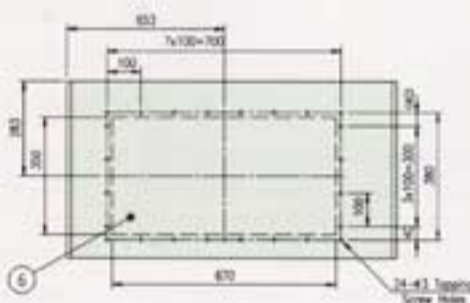
## FREE-BLOW TYPE (直吹型)

### RP-P10W



Mark	Name
1	Air Inlet (Front)
2	Pilot Lamp
3	Control Panel Cover
4	Length for Opening Control Panel Cover
5	Air Outlet (Front)
6	Air Outlet (Upper, for Branch Duct)
7	Power Source Wiring Hole (ø40.5 Knockout Hole)
8	Emergency Drain Connection (FPT 1/2")
9	Holes for Tapping Screw
10	Fresh Air Inlet (Both Sides by Duct, Field Option)
11	Connection Hole for Optional Heater (ø82 Knockout Hole)
12	Piping Connection Hole for Optional Humidifier (ø40.5 Knockout Hole)
13	Wiring Connection Hole for Optional Humidifier (ø26.1 Knockout Hole)
14	Drain Connection (FPT 1")
15	Cooling Water Outlet (FPT 1-1/2")
16	Cooling Water Inlet (FPT 1-1/2")
17	Holes for Anchor Bolt (4-M8)

### RP-P15W

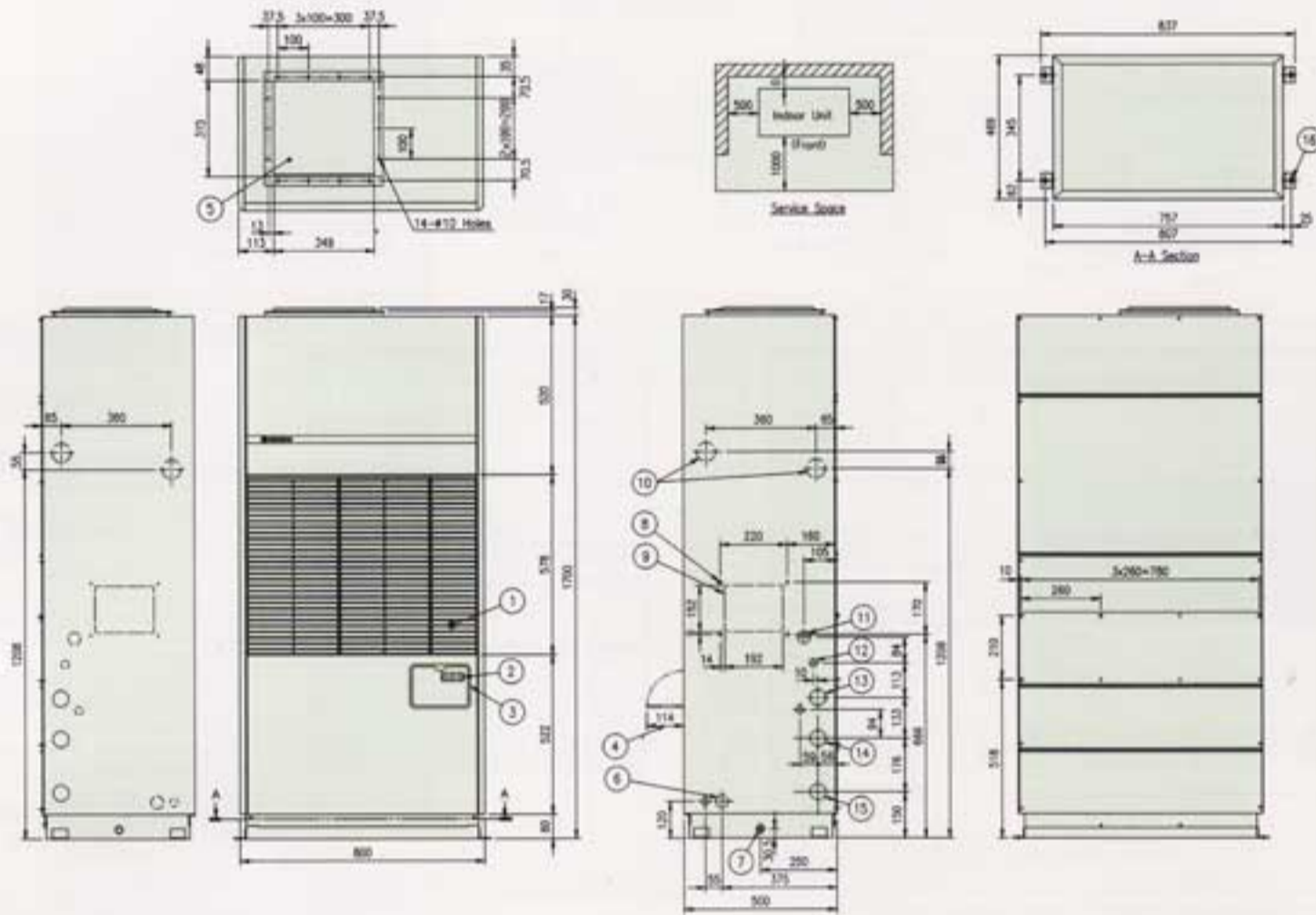


Mark	Name
1	Air Inlet (Front)
2	Pilot Lamp
3	Control Panel Cover
4	Length for Opening Control Panel Cover
5	Air Outlet (Front)
6	Air Outlet (Upper, for Branch Duct)
7	Power Source Wiring Hole (ø82 Knockout Hole)
8	Emergency Drain Connection (FPT 1/2")
9	Holes for Tapping Screw
10	Fresh Air Inlet (Both Sides by Duct, Field Option)
11	Connection Hole for Optional Heater (ø80 Knockout Hole)
12	Piping Connection Hole for Optional Humidifier (ø42 Knockout Hole)
13	Wiring Connection Hole for Optional Humidifier (ø42 Knockout Hole)
14	Drain Connection (FPT 1")
15	Cooling Water Outlet (FPT 2")
16	Cooling Water Inlet (FPT 2")
17	Air Inlet (Real, by Duct, Field Option)



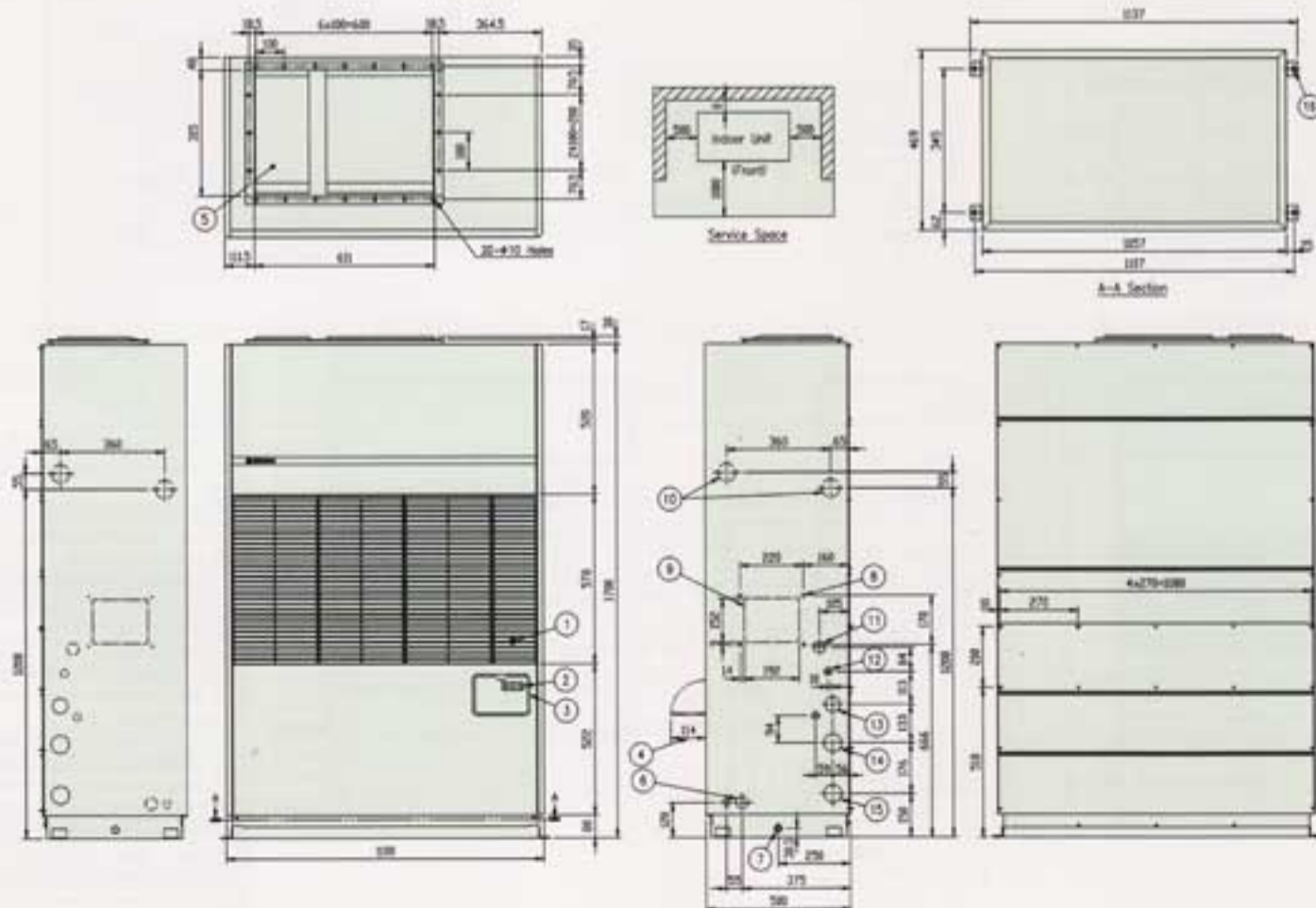
# DUCT-CONNECTION TYPE (風管型)

## RP-P5WP



Mark	Name
1	Air Inlet (Front)
2	Pilot Lamp
3	Control Panel Cover
4	Length for Opening Control Panel Cover
5	Air Outlet
6	Power Source Wiring Hole (ø40.5 Knockout Hole)
7	Emergency Drain Connection (FPT 1/2")
8	Holes for Tapping Screw
9	Fresh Air Inlet (Both Sides by Duct, Field Option)
10	Connection Hole for Optional Heater (ø62 Knockout Hole)
11	Piping Connection Hole for Optional Humidifier (ø40.5 Knockout Hole)
12	Wiring Connection Hole for Optional Humidifier (ø26.1 Knockout Hole)
13	Drain Connection (FPT 1")
14	Cooling Water Outlet (FPT 1-1/4")
15	Cooling Water Inlet (FPT 1-1/4")
16	Holes for Anchor Bolt (4-M8)

## RP-P8WP



Mark	Name
1	Air Inlet (Front)
2	Pilot Lamp
3	Control Panel Cover
4	Length for Opening Control Panel Cover
5	Air Outlet
6	Power Source Wiring Hole (ø40.5 Knockout Hole)
7	Emergency Drain Connection (FPT 1/2")
8	Holes for Tapping Screw
9	Fresh Air Inlet (Both Sides by Duct, Field Option)
10	Connection Hole for Optional Heater (ø62 Knockout Hole)
11	Piping Connection Hole for Optional Humidifier (ø40.5 Knockout Hole)
12	Wiring Connection Hole for Optional Humidifier (ø26.1 Knockout Hole)
13	Drain Connection (FPT 1")
14	Cooling Water Outlet (FPT 1-1/2")
15	Cooling Water Inlet (FPT 1-1/2")
16	Holes for Anchor Bolt (4-M8)











# GENERAL DATA 一般規格

## FREE-BLOW TYPE (直吹型)

Item (unit)		Model	RP-P5W	RP-P8W	RP-P10W	RP-P15W		
Nominal Cooling Capacity*	50Hz	kcal/h	12,000	19,300	24,100	38,700		
		W	14,000	22,400	28,000	45,000		
	60Hz	Btu/h	47,700	76,400	95,500	153,600		
		kcal/h	13,800	21,500	27,100	43,000		
Capacity Control	%	W	16,000	25,000	31,500	50,000		
		Btu/h	54,600	85,300	107,500	170,600		
Capacity Control		%	100.0	100.0	100.0	100.63.0		
Cabinet Color		Synthetic Resin Paint Baked on Finished Steel Plates						
Front Panel, Side Panel (MUNSELL Code)			Beige (2.5Y 8/2)	Beige (2.5Y 8/2)	Beige (2.5Y 8/2)	Beige (2.5Y 8/2)		
Air Outlet Grill (MUNSELL Code)			Gray (2.5Y 4.5/0.7)	Gray (2.5Y 4.5/0.7)	Gray (2.5Y 4.5/0.7)	Beige (2.5Y 8/2)		
Outer Dimensions	Height	mm	1,950	1,950	1,950	2,150		
		(in.)	(76-3/4)	(76-3/4)	(76-3/4)	(84-11/16)		
	Width	mm	800	1,100	1,400	1,400		
		(in.)	(31-1/2)	(43-5/16)	(55-1/8)	(55-1/8)		
Depth	mm	500	500	500	750			
	(in.)	(19-11/16)	(19-11/16)	(19-11/16)	(29-1/2)			
Net Weight		kg (lbs.)	170 (375)	285 (628)	320 (705)	495 (1,091)		
Refrigerant**			R407C	R407C	R407C	R407C		
Flow Control			CPT	CPT	CPT	CPT		
Number of Circuits			1	1	1	2		
Compressor Type			Hermetic Scroll	Hermetic Scroll	Hermetic Scroll	Hermetic Scroll		
Quantity			1	1	1	1+1		
Evaporator			Multi-Pass Cross-Finned Tube					
Condenser			Coiled Double Tube					
Evaporator Fan			Multi-Blade Centrifugal Fan					
Nominal Air Flow (Hi/Lo)	m <sup>3</sup> /min		44/38	66	88	130		
		m <sup>3</sup> /s	0.73/0.63	1.1	1.47	2.17		
		L/s	733/633	1,100	1,467	2,167		
		(cfm)	(1,554/1,342)	(2,330)	(3,108)	(4,590)		
Motor	kW		0.13	0.25	0.30	1.5		
	(HP)		(0.17)	(0.33)	(0.40)	(2)		
Quantity			1	1	1	1		
Condenser Water Quantity (50/60Hz)		m <sup>3</sup> /h	At the Condenser Water Inlet Temperature 30°C				10.0/11.2	
			3.1/3.5	4.9/5.5	6.2/7.0			
Connections			Female Piping Thread Screw ( Prepared on Both Sides )					
Condenser Water Size	Inlet	FPT	1-1/4	1-1/2	1-1/2	2		
	Outlet	FPT	1-1/4	1-1/2	1-1/2	2		
Condensate Drain Size		FPT	1	1	1	1		
Emergency Drain Size		FPT	1/2	1/2	1/2	1/2		
Wiring Hole Size		mm (in.)	Knock Out Hole ( Prepared on Both Sides )				62 (2-7/16)	
			40.5 (1-5/8)	40.5 (1-5/8)	40.5 (1-5/8)			
Approximate Packing List						Unit	Plenum Chamber	
Shipping Weight		kg (lbs.)	215 (474)	355 (739)	380 (838)	520 (1,146)	40 (88)	
Height		mm (in.)	2,125 (83-5/8)	2,125 (83-5/8)	2,125 (83-5/8)	2,070 (81-1/2)	460 (18-1/8)	
Width		mm (in.)	914 (36)	1,214 (47-13/16)	1,514 (59-5/8)	1,510 (59-7/16)	1,480 (58-9/32)	
Depth		mm (in.)	628 (24-3/4)	628 (24-3/4)	628 (24-3/4)	880 (34-5/8)	850 (33-13/32)	
Measurements		m <sup>3</sup>	1.22	1.62	2.02	2.75	0.58	

CPT : Capillary Tube

### Notes:

- \* The nominal cooling capacity is based on the standard of JIS B8616-1999  
 Evaporator Air Inlet Temperature: 27°C DB (80.6°F DB)  
 19°C WB (66.2°F WB)  
 Condenser Water Inlet Temperature: 30°C (86°F)  
 Condenser Water Outlet Temperature: 35°C (95°F)
- \*\* Factory-Charged

### Working Range:

Evaporator Air Inlet Temperature at Standard Air Flow :  
 Maximum : 32°C DB/23°C WB (89.6°F DB/73.4°F WB)  
 Minimum : 21°C DB/15°C WB (69.8°F DB/59.0°F WB)  
 Condenser Water Outlet Temperature:  
 Maximum : 38°C (100.4°F)  
 Minimum : 21°C (69.8°F)

### Standard Power Supply

Main (3φ)		Control (1φ)	
220V	60Hz	220V	60Hz
220V	50Hz	220V	50Hz
380V	50Hz	220V	50Hz
415V	50Hz	240V	50Hz



DUCT-CONNECTION TYPE (風管型)

Item (unit)			Model	RP-P5WP	RP-P8WP	RP-P10WP	RP-P15WP	RP-P20WP	RP-P25WP	RP-P30WP	RP-P40WP	
Nominal Cooling Capacity*	50Hz	kcal/h		12,000	19,300	24,100	38,700	48,100	61,000	77,400	96,300	
		W		14,000	22,400	28,000	45,000	56,000	71,000	90,000	112,000	
		Btu/h		47,700	76,400	95,500	153,600	191,100	242,200	307,100	382,100	
	60Hz	kcal/h		13,800	21,500	27,100	43,000	54,200	68,800	86,000	107,500	
		W		16,000	25,000	31,500	50,000	63,000	80,000	100,000	125,000	
		Btu/h		54,600	85,300	107,500	170,600	214,900	272,900	341,200	426,500	
Capacity Control			%	100.0	100.0	100.0	100.63.0	100.50.0	100.50.0	100.67.33.0	100.67.33.0	
Cabinet Color			Synthetic Resin Paint Baked on Finished Steel Plates									
Front Panel, Side Panel (MUNSELL Code)				Beige (2.5Y 8/2)	Beige (2.5Y 8/2)	Beige (2.5Y 8/2)	Beige (2.5Y 8/2)	Beige (2.5Y 8/2)	Beige (2.5Y 8/2)	Beige (2.5Y 8/2)	Beige (2.5Y 8/2)	
Air Outlet Grill (MUNSELL Code)				—	—	—	—	—	—	—	—	
Outer Dimensions	Height	mm	1,730	1,730	1,730	1,850+30	1,850+30	2,000+30	2,000+30	2,000+30	2,000+30	
		(in.)	(68-1/8)	(68-1/8)	(68-1/8)	(72-13/16+1-3/16)	(72-13/16+1-3/16)	(78-3/4+1-3/16)	(78-3/4+1-3/16)	(78-3/4+1-3/16)	(78-3/4+1-3/16)	
	Width	mm	800	1,100	1,400	1,400	1,700	1,700	2,000	2,000	2,000	
		(in.)	(31-1/2)	(43-5/16)	(55-1/8)	(55-1/8)	(66-15/16)	(66-15/16)	(78-3/4)	(78-3/4)	(78-3/4)	
Depth	mm	500	500	500	750	750	900+65	900+65	900+65	1,270+65		
	(in.)	(19-11/16)	(19-11/16)	(19-11/16)	(29-1/2)	(29-1/2)	(35-7/16+2-9/16)	(35-7/16+2-9/16)	(35-7/16+2-9/16)	(50+2-9/16)		
Net Weight		kg (lbs.)	165 (364)	275 (606)	305 (672)	480 (1,058)	620 (1,367)	710 (1,565)	900 (1,984)	900 (1,984)	1200 (2,646)	
Refrigerant**				R407C	R407C	R407C	R407C	R407C	R407C	R407C	R407C	
Flow Control				CPT	CPT	CPT	CPT	CPT	CPT	CPT	CPT	
Number of Circuits				1	1	1	2	2	2	3	3	
Compressor Type				Hermetic Scroll	Hermetic Scroll	Hermetic Scroll	Hermetic Scroll	Hermetic Scroll	Hermetic Scroll	Hermetic Scroll	Hermetic Scroll	
Quantity				1	1	1	1+1	2	2	3	3	
Evaporator				Multi-Pass Cross-Finned Tube								
Condenser				Coiled Double Tube								
				Shell-and-Tube Type								
Evaporator Fan				Multi-Blade Centrifugal Fan								
Nominal Air Flow	m <sup>3</sup> /min		44	66	88	130	180	220	260	360		
	m <sup>3</sup> /s		0.73	1.1	1.47	2.17	3.00	3.67	4.33	6.0		
	L/s		733	1,100	1,467	2,167	3,000	3,667	4,333	6,000		
	(cfm)		(1,554)	(2,330)	(3,108)	(4,590)	(6,360)	(7,770)	(9,180)	(12,700)		
Motor	kW		0.55	0.75	1.5	2.2	3.7	3.7	5.5	7.5		
	(HP)		(0.74)	(1)	(2)	(3)	(5)	(5)	(7.5)	(10)		
Quantity				1	1	1	1	1	1	1	1	
Condenser Water				At the Condenser Water Inlet Temperature 30°C								
Quantity (50/60Hz)		m <sup>3</sup> /h	3.1/3.5	4.9/5.5	6.2/7.0	10.0/11.2	12.6/14.2	16.0/18.1	20.2/22.5	24.8/28.1		
Connections				Female Piping Thread Screw ( Prepared on Both Sides )								
Condenser Water	Size Inlet	FPT	1-1/4	1-1/2	1-1/2	2	2	2-1/2	2-1/2	2-1/2		
	Outlet	FPT	1-1/4	1-1/2	1-1/2	2	2	2-1/2	2-1/2	2-1/2		
Condensate Drain				Female Piping Thread Screw ( Prepared on Both Sides )								
Size	FPT		1	1	1	1	1	1	1	1		
Emergency Drain				Female Piping Thread Screw ( Prepared on Both Sides )								
Size	FPT		1/2	1/2	1/2	1/2	1/2	1/2	1/2	1/2		
Wiring Hole				Knock Out Hole ( Prepared on Both Sides )								
Size	mm (in.)		40.5 (1-5/8)	40.5 (1-5/8)	40.5 (1-5/8)	62 (2-7/16)	62 (2-7/16)	62 (2-7/16)	62 (2-7/16)	80 (3-1/8)		
Approximate Packing List												
Shipping Weight		kg (lbs.)	210 (463)	315 (694)	360 (794)	525 (1,157)	705 (1,554)	820 (1,808)	1,020 (2,249)	1,290 (2,844)		
Height	mm (in.)		1,905 (75)	1,905 (75)	1,905 (75)	2,070 (81-1/2)	2,070 (81-1/2)	2,225 (87-5/8)	2,225 (87-5/8)	2,225 (87-5/8)		
Width	mm (in.)		914 (36)	1,214 (47-13/16)	1,514 (59-5/8)	1,510 (59-7/16)	1,810 (71-1/4)	1,860 (73-1/4)	2,160 (85-1/16)	2,160 (85-1/16)		
Depth	mm (in.)		628 (24-3/4)	628 (24-3/4)	628 (24-3/4)	880 (34-5/8)	880 (34-5/8)	1,105 (43-1/2)	1,105 (43-1/2)	1,475 (58-1/16)		
Measurements			m <sup>3</sup>	1.09	1.45	1.81	2.75	3.30	4.57	5.31	7.09	

CPT: 毛細管  
註記:

- \* 額定冷氣能力是依據 JIS B8616-1999 規格冷氣條件:  
蒸發器吸入空氣溫度: 27°C DB (80.6°F DB)  
19°C WB (66.2°F WB)  
冷凝器冷卻水入口溫度: 30°C (86°F)  
冷凝器冷卻水出口溫度: 35°C (95°F)
- \*\* 工廠充填

運轉範圍:

- 蒸發器吸入空氣溫度 (標準風量時):  
最高: 32°C DB / 23°C WB (89.6°F DB / 73.4°F WB)  
最低: 21°C DB / 15°C WB (69.8°F DB / 59.0°F WB)  
冷凝器冷卻水出口溫度:  
最高: 38°C (100.4°F)  
最低: 21°C (69.8°F)

標準電源

主回路 (3ø)	操作回路 (1ø)
220V 60Hz	220V 60Hz
220V 50Hz	220V 50Hz
380V 50Hz	220V 50Hz
415V 50Hz	240V 50Hz

Specifications in this catalog are subject to change without notice, in order that HITACHI may bring the latest innovations to our customers.  
本說明的內容隨時更改, 恕不另行通知: 此舉有助日立公司隨時把最新的科技創意帶來給客戶採用。