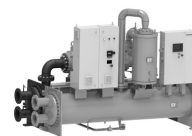


WATER-COOLED WATER CHILLER-Screw Type-WVY Series

MODEL NUMBER		RCUF155WVY
Nominal cooling capacity	kW	549(12/7 & 30/35)
Cooling capacity(design)	kW	549
EVAPORATOR		
Type		Flooded Type
Material shell/tube		Steel/Copper
Insulation		Polyethylene(19mm)
Chilled water outlet temperature	Deg.C	7
Chilled water inlet temperature	Deg.C	12
Chilled water flow rate	m3/h	94.4
Evaporator pressure drop	kPa	30
Specific Fouling Factor	m2.Deg.C/kW	0.018
CONDENSER		
Type(Material)		Shell and Tube(Steel/Copper)
Condenser water outlet temperature	Deg.C	35
Condenser water inlet temperature	Deg.C	30
Condenser water flow rate	m3/h	110.5
Condenser pressure drop	kPa	40
Condenser heat ejection	kW	642.7
Specific Fouling Factor	m2.Deg.C/kW	0.044
COMPRESSOR		
Type		Semi-Hermetic Screw Type
Model		GSCCW-150Z
Quantity		1
Revolutions	50Hz-r/min.	2880
Circuits		1
Refrigerant		R134a
Capacity control	%	100-20.0
Motor type		Three-Phase asynchronism
Starting method		Inverter
Number of poles		2
Insulation class		F
Output power(motor)	kW	90
ELECTRICAL DATA		
Power supply	V/Phase/Hz	380/3/50
Maximum unit voltage	V	418
Minimum unit voltage	V	342
Maximum unit current	A	263
Starting current(Comp.No.1-)	A	-
Running current	A	169
Input power	kW	93.7
DIMENSIONS AND WEIGHT		
Depth	mm	3275
Width	mm	1765
Height	mm	2258
Net weight	kg	3984
NOISE		
The measuring point is 1 m from the centre of the machine's surface and 1.5 m from floor level.		
dB(A)		85.6
OPERATING SPACE		
Front of unit	mm	1200
Right,left and back of unit	mm	600,600&600

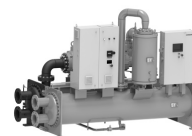
Note: Specifications in this sheet are just for reference only.Hitachi shall reserve right to change specification in this sheet without any notice.



WATER-COOLED WATER CHILLER-Screw Type-WVY Series

MODEL NUMBER		RCUF210WVY
Nominal cooling capacity	kW	732(12/7 & 30/35)
Cooling capacity(design)	kW	732
EVAPORATOR		
Type		Flooded Type
Material shell/tube		Steel/Copper
Insulation		Polyethylene(19mm)
Chilled water outlet temperature	Deg.C	7
Chilled water inlet temperature	Deg.C	12
Chilled water flow rate	m3/h	125.9
Evaporator pressure drop	kPa	32
Specific Fouling Factor	m2.Deg.C/kW	0.018
CONDENSER		
Type(Material)		Shell and Tube(Steel/Copper)
Condenser water outlet temperature	Deg.C	35
Condenser water inlet temperature	Deg.C	30
Condenser water flow rate	m3/h	147.4
Condenser pressure drop	kPa	41
Condenser heat ejection	kW	857.3
Specific Fouling Factor	m2.Deg.C/kW	0.044
COMPRESSOR		
Type		Semi-Hermetic Screw Type
Model		GSCCW-200Z
Quantity		1
Revolutions	50Hz-r/min.	2880
Circuits		1
Refrigerant		R134a
Capacity control	%	100-20.0
Motor type		Three-Phase asynchronism
Starting method		Inverter
Number of poles		2
Insulation class		F
Output power(motor)	kW	128
ELECTRICAL DATA		
Power supply	V/Phase/Hz	380/3/50
Maximum unit voltage	V	418
Minimum unit voltage	V	342
Maximum unit current	A	351
Starting current(Comp.No.1-)	A	-
Running current	A	226
Input power	kW	125.3
DIMENSIONS AND WEIGHT		
Depth	mm	3275
Width	mm	1765
Height	mm	2258
Net weight	kg	4390
NOISE		
The measuring point is 1 m from the centre of the machine's surface and 1.5 m from floor level.		
dB(A)		86.1
OPERATING SPACE		
Front of unit	mm	1200
Right,left and back of unit	mm	600,600&600

Note:Specifications in this sheet are just for reference only.Hitachi shall reserve right to change specification in this sheet without any notice.



WATER-COOLED WATER CHILLER-Screw Type-WVY Series

MODEL NUMBER		RCUF260WVY
Nominal cooling capacity	kW	915(12/7 & 30/35)
Cooling capacity(design)	kW	915
EVAPORATOR		
Type		Flooded Type
Material shell/tube		Steel/Copper
Insulation		Polyethylene(19mm)
Chilled water outlet temperature	Deg.C	7
Chilled water inlet temperature	Deg.C	12
Chilled water flow rate	m3/h	157.4
Evaporator pressure drop	kPa	34
Specific Fouling Factor	m2.Deg.C/kW	0.018
CONDENSER		
Type(Material)		Shell and Tube(Steel/Copper)
Condenser water outlet temperature	Deg.C	35
Condenser water inlet temperature	Deg.C	30
Condenser water flow rate	m3/h	184.5
Condenser pressure drop	kPa	43
Condenser heat ejection	kW	1072.8
Specific Fouling Factor	m2.Deg.C/kW	0.044
COMPRESSOR		
Type		Semi-Hermetic Screw Type
Model		GSCCW-250Z
Quantity		1
Revolutions	50Hz-r/min.	2880
Circuits		1
Refrigerant		R134a
Capacity control	%	100-20.0
Motor type		Three-Phase asynchronism
Starting method		Inverter
Number of poles		2
Insulation class		F
Output power(motor)	kW	150
ELECTRICAL DATA		
Power supply	V/Phase/Hz	380/3/50
Maximum unit voltage	V	418
Minimum unit voltage	V	342
Maximum unit current	A	439
Starting current(Comp.No.1-)	A	-
Running current	A	282
Input power	kW	157.8
DIMENSIONS AND WEIGHT		
Depth	mm	3275
Width	mm	1765
Height	mm	2258
Net weight	kg	4550
NOISE		
The measuring point is 1 m from the centre of the machine's surface and 1.5 m from floor level.		
dB(A)		86.5
OPERATING SPACE		
Front of unit	mm	1200
Right,left and back of unit	mm	600,600&600

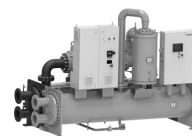
Note:Specifications in this sheet are just for reference only.Hitachi shall reserve right to change specification in this sheet without any notice.



WATER-COOLED WATER CHILLER-Screw Type-WVY Series

MODEL NUMBER		RCUF310WVY
Nominal cooling capacity	kW	1098(12/7 & 30/35)
Cooling capacity(design)	kW	1098
EVAPORATOR		
Type		Flooded Type
Material shell/tube		Steel/Copper
Insulation		Polyethylene(19mm)
Chilled water outlet temperature	Deg.C	7
Chilled water inlet temperature	Deg.C	12
Chilled water flow rate	m3/h	188.8
Evaporator pressure drop	kPa	67
Specific Fouling Factor	m2.Deg.C/kW	0.018
CONDENSER		
Type(Material)		Shell and Tube(Steel/Copper)
Condenser water outlet temperature	Deg.C	35
Condenser water inlet temperature	Deg.C	30
Condenser water flow rate	m3/h	221
Condenser pressure drop	kPa	66
Condenser heat ejection	kW	1285.1
Specific Fouling Factor	m2.Deg.C/kW	0.044
COMPRESSOR		
Type		Semi-Hermetic Screw Type
Model		GSCCW-150Z
Quantity		2
Revolutions	50Hz-r/min.	2880
Circuits		1
Refrigerant		R134a
Capacity control	%	100-15.0
Motor type		Three-Phase asynchronism
Starting method		Inverter
Number of poles		2
Insulation class		F
Output power(motor)	kW	90
ELECTRICAL DATA		
Power supply	V/Phase/Hz	380/3/50
Maximum unit voltage	V	418
Minimum unit voltage	V	342
Maximum unit current	A	527
Starting current(Comp.No.1-)	A	-
Running current	A	338
Input power	kW	187.1
DIMENSIONS AND WEIGHT		
Depth	mm	4687
Width	mm	1823
Height	mm	2318
Net weight	kg	6880
NOISE		
The measuring point is 1 m from the centre of the machine's surface and 1.5 m from floor level.		
dB(A)		87.3
OPERATING SPACE		
Front of unit	mm	1200
Right,left and back of unit	mm	600,600&600

Note:Specifications in this sheet are just for reference only.Hitachi shall reserve right to change specification in this sheet without any notice.



WATER-COOLED WATER CHILLER-Screw Type-WVY Series

MODEL NUMBER		RCUF365WVY
Nominal cooling capacity	kW	1281(12/7 & 30/35)
Cooling capacity(design)	kW	1281
EVAPORATOR		
Type		Flooded Type
Material shell/tube		Steel/Copper
Insulation		Polyethylene(19mm)
Chilled water outlet temperature	Deg.C	7
Chilled water inlet temperature	Deg.C	12
Chilled water flow rate	m3/h	220.3
Evaporator pressure drop	kPa	69
Specific Fouling Factor	m2.Deg.C/kW	0.018
CONDENSER		
Type(Material)		Shell and Tube(Steel/Copper)
Condenser water outlet temperature	Deg.C	35
Condenser water inlet temperature	Deg.C	30
Condenser water flow rate	m3/h	258.3
Condenser pressure drop	kPa	68
Condenser heat ejection	kW	1502.2
Specific Fouling Factor	m2.Deg.C/kW	0.044
COMPRESSOR		
Type		Semi-Hermetic Screw Type
Model		GSCCW-200Z/GSCCW-150Z
Quantity		2
Revolutions	50Hz-r/min.	2880
Circuits		1
Refrigerant		R134a
Capacity control	%	100-15.0
Motor type		Three-Phase asynchronous
Starting method		Inverter
Number of poles		2
Insulation class		F
Output power(motor)	kW	128/90
ELECTRICAL DATA		
Power supply	V/Phase/Hz	380/3/50
Maximum unit voltage	V	418
Minimum unit voltage	V	342
Maximum unit current	A	593
Starting current(Comp.No.1-)	A	-
Running current	A	395
Input power	kW	221.2
DIMENSIONS AND WEIGHT		
Depth	mm	4687
Width	mm	1823
Height	mm	2318
Net weight	kg	7195
NOISE		
The measuring point is 1 m from the centre of the machine's surface and 1.5 m from floor level.		
dB(A)		87.7
OPERATING SPACE		
Front of unit	mm	1200
Right,left and back of unit	mm	600,600&600

Note:Specifications in this sheet are just for reference only.Hitachi shall reserve right to change specification in this sheet without any notice.



WATER-COOLED WATER CHILLER-Screw Type-WVY Series

MODEL NUMBER		RCUF420WVY
Nominal cooling capacity	kW	1464(12/7 & 30/35)
Cooling capacity(design)	kW	1464
EVAPORATOR		
Type		Flooded Type
Material shell/tube		Steel/Copper
Insulation		Polyethylene(19mm)
Chilled water outlet temperature	Deg.C	7
Chilled water inlet temperature	Deg.C	12
Chilled water flow rate	m3/h	251.8
Evaporator pressure drop	kPa	71
Specific Fouling Factor	m2.Deg.C/kW	0.018
CONDENSER		
Type(Material)		Shell and Tube(Steel/Copper)
Condenser water outlet temperature	Deg.C	35
Condenser water inlet temperature	Deg.C	30
Condenser water flow rate	m3/h	295.3
Condenser pressure drop	kPa	70
Condenser heat ejection	kW	1717.3
Specific Fouling Factor	m2.Deg.C/kW	0.044
COMPRESSOR		
Type		Semi-Hermetic Screw Type
Model		GSCCW-200Z
Quantity		2
Revolutions	50Hz-r/min.	2880
Circuits		1
Refrigerant		R134a
Capacity control	%	100-15.0
Motor type		Three-Phase asynchronism
Starting method		Inverter
Number of poles		2
Insulation class		F
Output power(motor)	kW	128
ELECTRICAL DATA		
Power supply	V/Phase/Hz	380/3/50
Maximum unit voltage	V	418
Minimum unit voltage	V	342
Maximum unit current	A	678
Starting current(Comp.No.1-)	A	-
Running current	A	452
Input power	kW	253.3
DIMENSIONS AND WEIGHT		
Depth	mm	4687
Width	mm	1823
Height	mm	2318
Net weight	kg	7510
NOISE		
The measuring point is 1 m from the centre of the machine's surface and 1.5 m from floor level.		
dB(A)		88.1
OPERATING SPACE		
Front of unit	mm	1200
Right,left and back of unit	mm	600,600&600

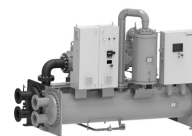
Note:Specifications in this sheet are just for reference only.Hitachi shall reserve right to change specification in this sheet without any notice.



WATER-COOLED WATER CHILLER-Screw Type-WVY Series

MODEL NUMBER		RCUF470WVY
Nominal cooling capacity	kW	1647(12/7 & 30/35)
Cooling capacity(design)	kW	1647
EVAPORATOR		
Type		Flooded Type
Material shell/tube		Steel/Copper
Insulation		Polyethylene(19mm)
Chilled water outlet temperature	Deg.C	7
Chilled water inlet temperature	Deg.C	12
Chilled water flow rate	m3/h	283.2
Evaporator pressure drop	kPa	73
Specific Fouling Factor	m2.Deg.C/kW	0.018
CONDENSER		
Type(Material)		Shell and Tube(Steel/Copper)
Condenser water outlet temperature	Deg.C	35
Condenser water inlet temperature	Deg.C	30
Condenser water flow rate	m3/h	332.4
Condenser pressure drop	kPa	71
Condenser heat ejection	kW	1932.9
Specific Fouling Factor	m2.Deg.C/kW	0.044
COMPRESSOR		
Type		Semi-Hermetic Screw Type
Model		GSCCW-250Z/GSCCW-200Z
Quantity		2
Revolutions	50Hz-r/min.	2880
Circuits		1
Refrigerant		R134a
Capacity control	%	100-15.0
Motor type		Three-Phase asynchronism
Starting method		Inverter
Number of poles		2
Insulation class		F
Output power(motor)	kW	150/128
ELECTRICAL DATA		
Power supply	V/Phase/Hz	380/3/50
Maximum unit voltage	V	418
Minimum unit voltage	V	342
Maximum unit current	A	763
Starting current(Comp.No.1-)	A	-
Running current	A	508
Input power	kW	285.9
DIMENSIONS AND WEIGHT		
Depth	mm	4687
Width	mm	1823
Height	mm	2318
Net weight	kg	7775
NOISE		
The measuring point is 1 m from the centre of the machine's surface and 1.5 m from floor level.		
dB(A)		88.4
OPERATING SPACE		
Front of unit	mm	1200
Right,left and back of unit	mm	600,600&600

Note:Specifications in this sheet are just for reference only.Hitachi shall reserve right to change specification in this sheet without any notice.



WATER-COOLED WATER CHILLER-Screw Type-WVY Series

MODEL NUMBER		RCUF520WVY
Nominal cooling capacity	kW	1830(12/7 & 30/35)
Cooling capacity(design)	kW	1830
EVAPORATOR		
Type		Flooded Type
Material shell/tube		Steel/Copper
Insulation		Polyethylene(19mm)
Chilled water outlet temperature	Deg.C	7
Chilled water inlet temperature	Deg.C	12
Chilled water flow rate	m3/h	314.7
Evaporator pressure drop	kPa	75
Specific Fouling Factor	m2.Deg.C/kW	0.018
CONDENSER		
Type(Material)		Shell and Tube(Steel/Copper)
Condenser water outlet temperature	Deg.C	35
Condenser water inlet temperature	Deg.C	30
Condenser water flow rate	m3/h	369.4
Condenser pressure drop	kPa	73
Condenser heat ejection	kW	2148.3
Specific Fouling Factor	m2.Deg.C/kW	0.044
COMPRESSOR		
Type		Semi-Hermetic Screw Type
Model		GSCCW-250Z
Quantity		2
Revolutions	50Hz-r/min.	2880
Circuits		1
Refrigerant		R134a
Capacity control	%	100-15.0
Motor type		Three-Phase asynchronism
Starting method		Inverter
Number of poles		2
Insulation class		F
Output power(motor)	kW	150
ELECTRICAL DATA		
Power supply	V/Phase/Hz	380/3/50
Maximum unit voltage	V	418
Minimum unit voltage	V	342
Maximum unit current	A	848
Starting current(Comp.No.1-)	A	-
Running current	A	564
Input power	kW	318.3
DIMENSIONS AND WEIGHT		
Depth	mm	4687
Width	mm	1823
Height	mm	2318
Net weight	kg	8040
NOISE		
The measuring point is 1 m from the centre of the machine's surface and 1.5 m from floor level.		
dB(A)		89
OPERATING SPACE		
Front of unit	mm	1200
Right,left and back of unit	mm	600,600&600

Note:Specifications in this sheet are just for reference only.Hitachi shall reserve right to change specification in this sheet without any notice.